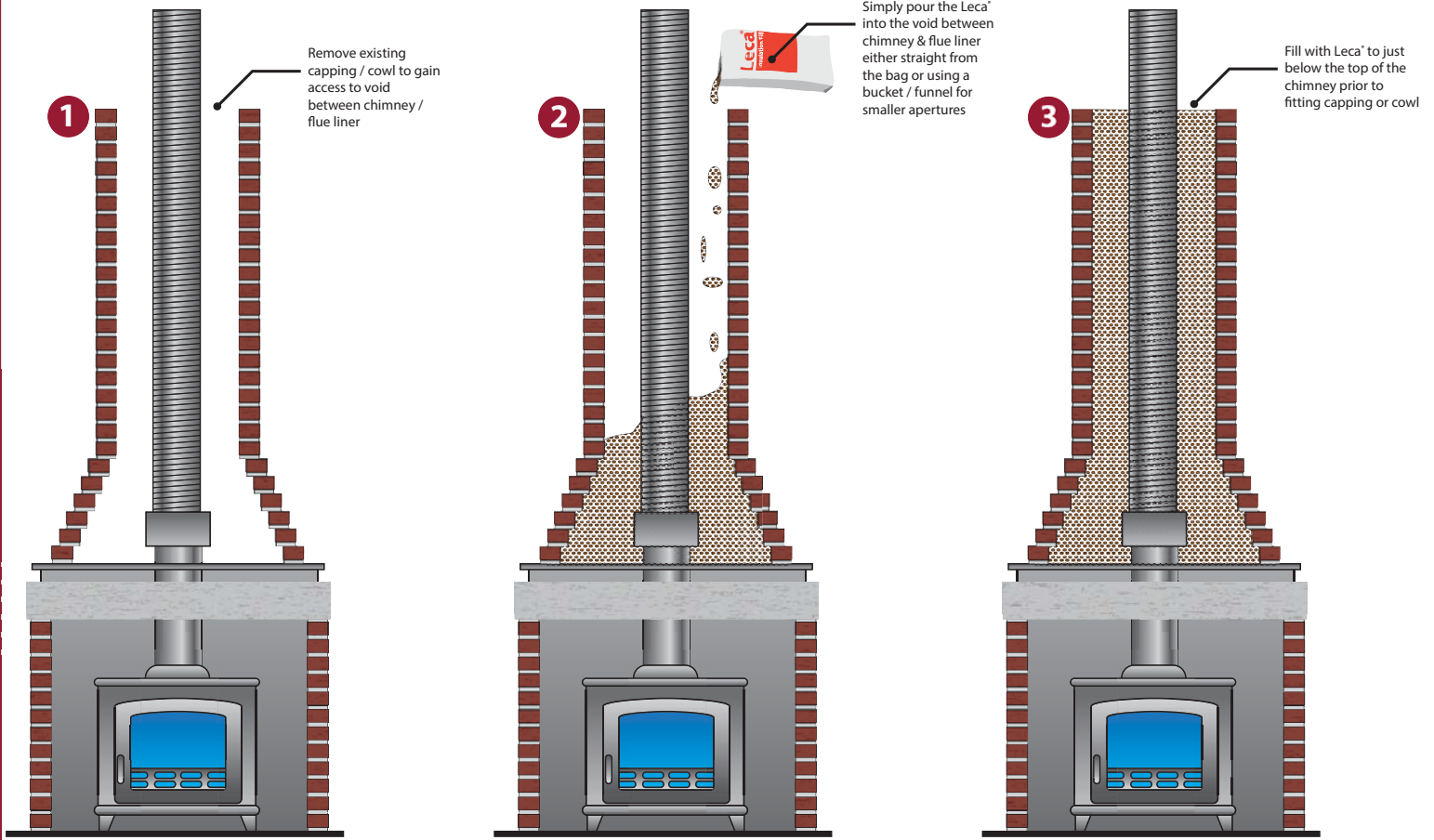


Chimney & Flue Insulation Backfill



*image for illustration purposes only

Safety Consideration - for full MSDS please see www.SpecialistAggregates.com

Leca® Chimney & Flue Insulation bags weigh a nominal 15kg, which falls well within the H&SE recommendations for a single-man lift. Leca® Insulation Fill is chemically neutral and does not contain any environmentally harmful constituents. It is dust free, safe to handle and does not need any special protective



Quick To Install



Lightweight







Easy To Use



Economical

4 -10mm Leca® Chimney & Flue Insulation Backfill (Product Code: 7890)

No of Bags	6	12	21	30
Approx' coverage at 150mm thick	2 m ²	4 m ²	7 m ²	10 m ²
Approx' pallet size	 800 x 1200 x 450 (mm)	 800 x 1200 x 750 (mm)	 800 x 1200 x 1200 (mm)	 800 x 1200 x 1650 (mm)